

JUMBOTRAC®

The "Slide-In" Engineered Frame Tent



WHY JUMBOTRAC?

- No lace line, Keder design cuts labor by up to 30%
- Less weight than competitive versions
- As much as 50% fewer parts than traditional frames
- Significantly reduced wear and tear on tent fabric
- Install fabric on the ground or in the air

PRODUCT OVERVIEW

Conceptualized by members of the event rental industry and then engineered and perfected by the professional design team at Aztec Tents, the Jumbotrac® features kedered tops and walls that slide through channels in the frame without the need for lace lines. This allows for dramatically improved installation times and significantly diminishes wear and tear on the fabric membrane. The proprietary aircraft aluminum frame construction allows for longer, stronger spans which reduce the number of legs required and result in less weight and fewer staking

points. The Jumbotrac® creates an event space with clean lines and uncluttered elegance, yet is built to take the repeated stress of today's event rental marketplace.

The Jumbotrac® is available in hip, gable and hex end configurations in widths from 20' up to 50'. The standard system is a jack-up design with the gable version also available in a tilt-up version.

ENGINEERING

System engineered to ASCE 7-10 100mph (3 Second Gust) Exposure "C"

Snow-Load Ratings Available for 20x, 30x and 40x

PRODUCT VIDEO



See our website or our Youtube Channel for a product video featuring the benefits of this tent system.

CALL US TODAY 800.228.3687 · AZTECTENTS.COM

AZTEC TENTS
DESIGN & PRODUCTION

THE AZTEC ADVANTAGE

THE MOST VERSATILE HYBRID FRAME TENT SYSTEM IN THE INDUSTRY

SPECIFICATIONS

Widths:

20', 30', 40', and 50' Wide

Lengths:

Expandable in 10', 15', and 20' modular sections (50x only 10' & 15')

Configurations:

Hip, Gable, Hex End and Band Shell. Gable version available in tilt-up or jack-up designs

Fabric:

17oz PVC Snyder Laminated blockout white standard membrane. Transparent clear and other colors are available

Framework:

6061-T6 Anodized Aluminum frame system with powder coated steel fittings

Flame Retardancy:

NFPA 701, CA State Fire Marshall Title 19

Engineering:

ASCE 7-10 100MPH Exposure "C"

Snow-Load Rating:

Available for 20x, 30x and 40x

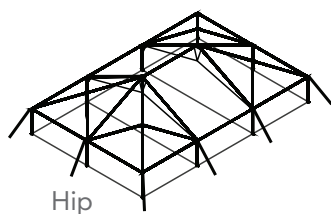
Common Accessories:

Sidewalls, JT Plus Wall Bars, doors, double valance, jacks, JT Keder Feeder, JT Keder Leader, JT Hanging Bracket, pull ropes, and repair kits

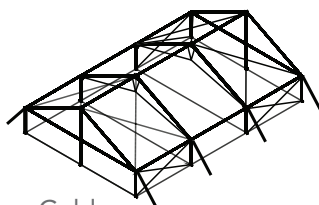


1. Jumbotrac® rafter beam section 2. Push button fitting connections allow for assembly without tools 3. Slide-in tops means no more lacing 4. Walls slide like a shower curtain 5. Double valance option for easily connecting gutters and traditional sidewalls. 6. Available accessories include the JT Hanging Bracket Assembly.

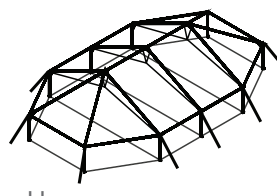
CONFIGURATIONS



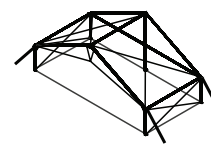
Hip



Gable



Hex



Bandshell

CALL US TODAY 800.228.3687 · AZTECTENTS.COM

 **AZTEC TENTS**
DESIGN & PRODUCTION