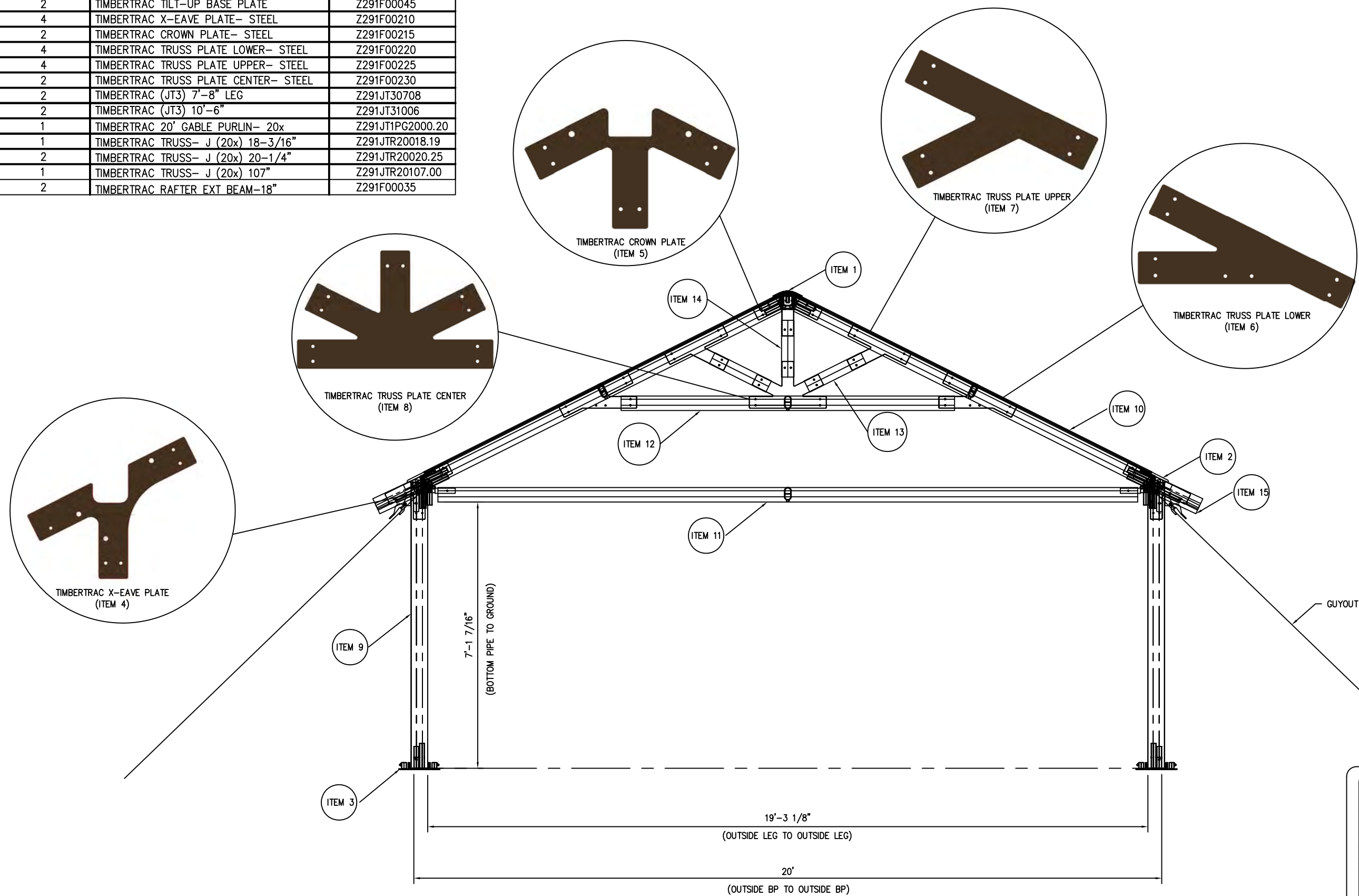


ITEM	QUANTITY	DESCRIPTION	PART #
1	1	TIMBERTRAC GABLE CROWN	Z291F00010
2	2	TIMBERTRAC X-GABLE CORNER (L/R)	Z291F00020/Z291F00025
3	2	TIMBERTRAC TILT-UP BASE PLATE	Z291F00045
4	4	TIMBERTRAC X-EAVE PLATE- STEEL	Z291F00210
5	2	TIMBERTRAC CROWN PLATE- STEEL	Z291F00215
6	4	TIMBERTRAC TRUSS PLATE LOWER- STEEL	Z291F00220
7	4	TIMBERTRAC TRUSS PLATE UPPER- STEEL	Z291F00225
8	2	TIMBERTRAC TRUSS PLATE CENTER- STEEL	Z291F00230
9	2	TIMBERTRAC (JT3) 7'-8" LEG	Z291JT30708
10	2	TIMBERTRAC (JT3) 10'-6"	Z291JT31006
11	1	TIMBERTRAC 20' GABLE PURLIN- 20x	Z291JT1PG2000.20
12	1	TIMBERTRAC TRUSS- J (20x) 18-3/16"	Z291JTR20018.19
13	2	TIMBERTRAC TRUSS- J (20x) 20-1/4"	Z291JTR20020.25
14	1	TIMBERTRAC TRUSS- J (20x) 107"	Z291JTR20107.00
15	2	TIMBERTRAC RAFTER EXT BEAM-18"	Z291F00035

20'W X-GABLE END TIMBERTRAC PROFILE



ALL DATA AND INFORMATION CONTAINED IN OR DISCLOSED BY THIS DOCUMENT IS PROPRIETARY INFORMATION OF AZTEC TENTS AND ALL RIGHTS THEREIN ARE EXPRESSLY RESERVED. BY ACCEPTING THIS MATERIAL THE RECIPIENT AGREES THAT THIS MATERIAL AND INFORMATION CONTAINED THEREIN IS HELD IN CONFIDENCE AND IN TRUST AND WILL NOT BE COPIED, REPRODUCED WHOLE OR IN PART, NOR ITS CONTENTS REVEALED IN ANY MANNER TO OTHERS, EXCEPT TO MEET THE SPECIFIC PURPOSE FOR WHICH IT WAS DELIVERED.

AZTEC TENTS
 DESIGN & PRODUCTION
 2665 COLUMBIA ST. TORRANCE, CA. 90503
 (800) 228-3687 - FAX (310) 381-0722

TIMBERTRAC FRAME TENT
 20'W X-GABLE END PROFILE
 PART NUMBER: Z26220CE1508

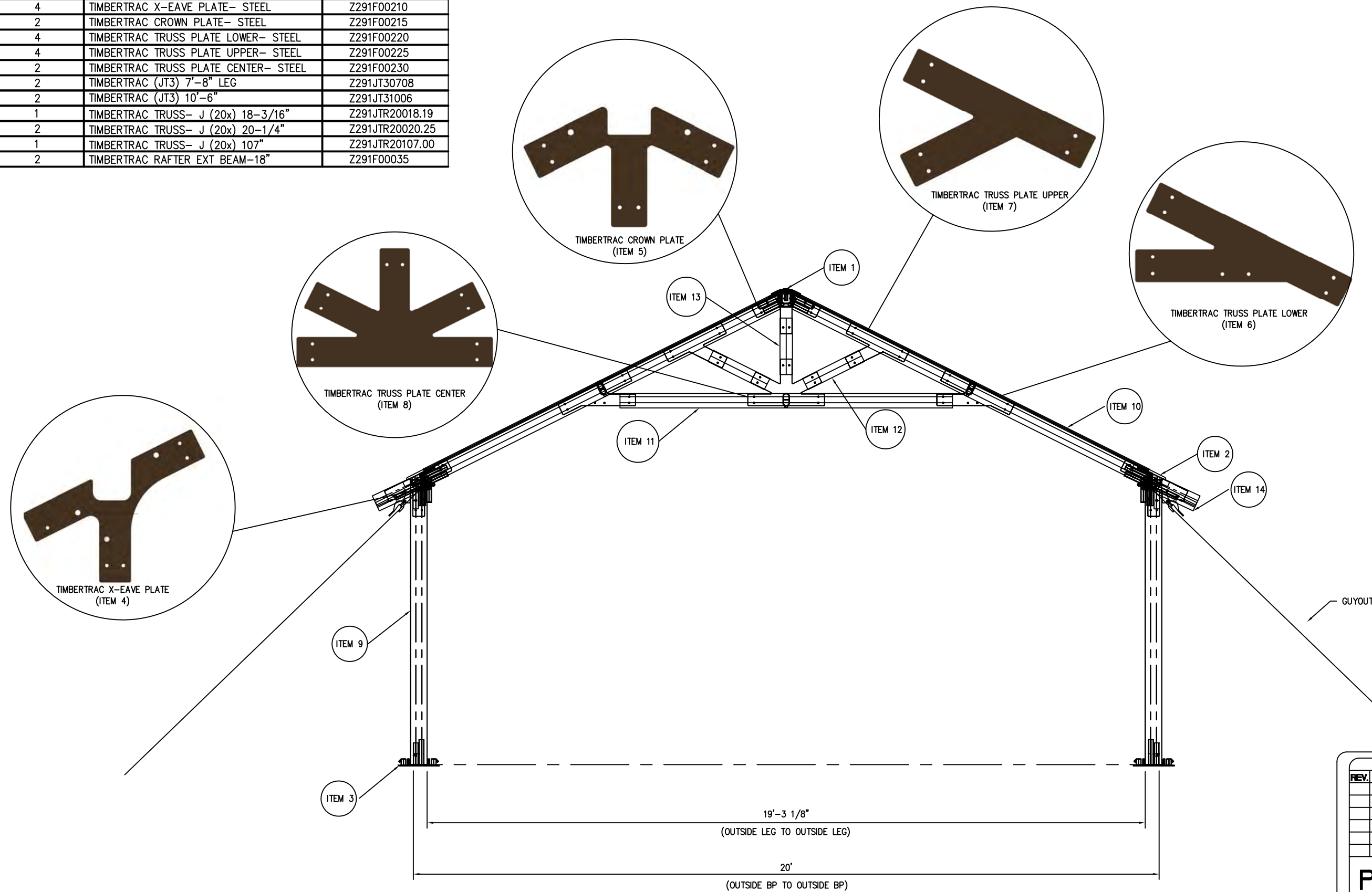
REVISION HISTORY			
REV.	DESCRIPTION	BY:	DATE:

PROPRIETARY

ENGINEER: N/A	DATE: 7/2/2020
PAGE: 1 OF 1	DRAWN: LYZ

ITEM	QUANTITY	DESCRIPTION	PART #
1	1	TIMBERTRAC CENTER CROWN	Z291F00015
2	2	TIMBERTRAC X-SIDE TEE	Z291F00030
3	2	TIMBERTRAC TILT-UP BASE PLATE	Z291F00045
4	4	TIMBERTRAC X-EAVE PLATE- STEEL	Z291F00210
5	2	TIMBERTRAC CROWN PLATE- STEEL	Z291F00215
6	4	TIMBERTRAC TRUSS PLATE LOWER- STEEL	Z291F00220
7	4	TIMBERTRAC TRUSS PLATE UPPER- STEEL	Z291F00225
8	2	TIMBERTRAC TRUSS PLATE CENTER- STEEL	Z291F00230
9	2	TIMBERTRAC (JT3) 7'-8" LEG	Z291JT30708
10	2	TIMBERTRAC (JT3) 10'-6"	Z291JT31006
11	1	TIMBERTRAC TRUSS- J (20x) 18-3/16"	Z291JTR20018.19
12	2	TIMBERTRAC TRUSS- J (20x) 20-1/4"	Z291JTR20020.25
13	1	TIMBERTRAC TRUSS- J (20x) 107"	Z291JTR20107.00
14	2	TIMBERTRAC RAFTER EXT BEAM-18"	Z291F00035

20'W MID X-TIMBERTRAC PROFILE



ALL DATA AND INFORMATION CONTAINED IN OR DISCLOSED BY THIS DOCUMENT IS PROPRIETARY INFORMATION OF AZTEC TENTS AND ALL RIGHTS THEREIN ARE EXPRESSLY RESERVED. BY ACCEPTING THIS MATERIAL, THE RECIPIENT AGREES THAT THIS MATERIAL AND INFORMATION CONTAINED HEREIN IS HELD IN CONFIDENCE AND IN TRUST AND WILL NOT BE COPIED, REPRODUCED WHOLE OR IN PART, NOR ITS CONTENTS REVEALED IN ANY MANNER TO OTHERS, EXCEPT TO MEET THE SPECIFIC PURPOSE FOR WHICH IT WAS DELIVERED.

AZTEC TENTS
 DESIGN & PRODUCTION
 2665 COLUMBIA ST. TORRANCE, CA. 90503
 (800) 228-3687 - FAX (310) 381-0722

TIMBERTRAC FRAME TENT
 20'W X-TIMBERTRAC MID PROFILE
 PART NUMBER: Z26220CM1508

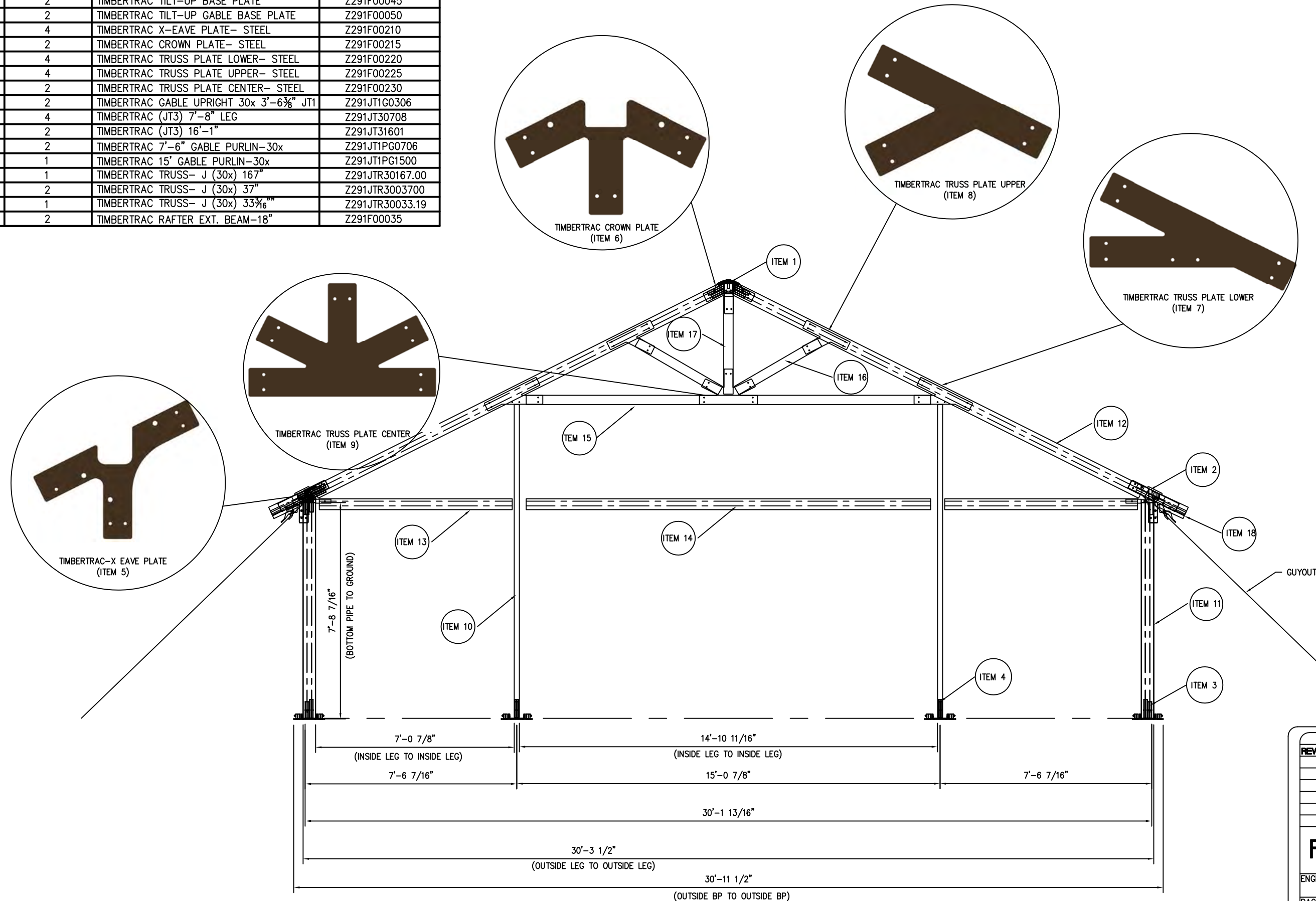
REVISION HISTORY			
REV.	DESCRIPTION	BY:	DATE:

PROPRIETARY

ENGINEER:	N/A	DATE:	7/2/2020
PAGE:	1 OF 1	DRAWN:	LYZ

ITEM	QUANTITY	DESCRIPTION	PART #
1	1	TIMBERTRAC GABLE CROWN	Z291F00010
2	2	TIMBERTRAC X-GABLE CORNER (L/R)	Z291F00020/Z291F00025
3	2	TIMBERTRAC TILT-UP BASE PLATE	Z291F00045
4	2	TIMBERTRAC TILT-UP GABLE BASE PLATE	Z291F00050
5	4	TIMBERTRAC X-EAVE PLATE- STEEL	Z291F00210
6	2	TIMBERTRAC CROWN PLATE- STEEL	Z291F00215
7	4	TIMBERTRAC TRUSS PLATE LOWER- STEEL	Z291F00220
8	4	TIMBERTRAC TRUSS PLATE UPPER- STEEL	Z291F00225
9	2	TIMBERTRAC TRUSS PLATE CENTER- STEEL	Z291F00230
10	2	TIMBERTRAC GABLE UPRIGHT 30x 3'-6 3/8" JT1	Z291JT1G0306
11	4	TIMBERTRAC (JT3) 7'-8" LEG	Z291JT30708
12	2	TIMBERTRAC (JT3) 16'-1"	Z291JT31601
13	2	TIMBERTRAC 7'-6" GABLE PURLIN-30x	Z291JT1PG0706
14	1	TIMBERTRAC 15' GABLE PURLIN-30x	Z291JT1PG1500
15	1	TIMBERTRAC TRUSS- J (30x) 167"	Z291JTR30167.00
16	2	TIMBERTRAC TRUSS- J (30x) 37"	Z291JTR3003700
17	1	TIMBERTRAC TRUSS- J (30x) 33 1/6"	Z291JTR30033.19
18	2	TIMBERTRAC RAFTER EXT. BEAM-18"	Z291F00035

30'W X-GABLE END TIMBERTRAC PROFILE



ALL DATA AND INFORMATION CONTAINED IN OR DISCLOSED BY THIS DOCUMENT IS PROPRIETARY INFORMATION OF AZTEC TENTS AND ALL RIGHTS THEREIN ARE EXPRESSLY RESERVED. BY ACCEPTING THIS MATERIAL THE RECIPIENT AGREES THAT THIS MATERIAL AND INFORMATION CONTAINED THEREIN IS HELD IN CONFIDENCE AND IN TRUST AND WILL NOT BE COPIED, REPRODUCED WHOLE OR IN PART, NOR ITS CONTENTS REVEALED IN ANY MANNER TO OTHERS, EXCEPT TO MEET THE SPECIFIC PURPOSE FOR WHICH IT WAS DELIVERED.

AZTEC TENTS
 DESIGN & PRODUCTION
 2665 COLUMBIA ST. TORRANCE, CA. 90503
 (800) 228-3687 - FAX (310) 381-0722

TIMBERTRAC FRAME TENT
 30'W X-GABLE END PROFILE
 PART NUMBER: Z29230CE1508

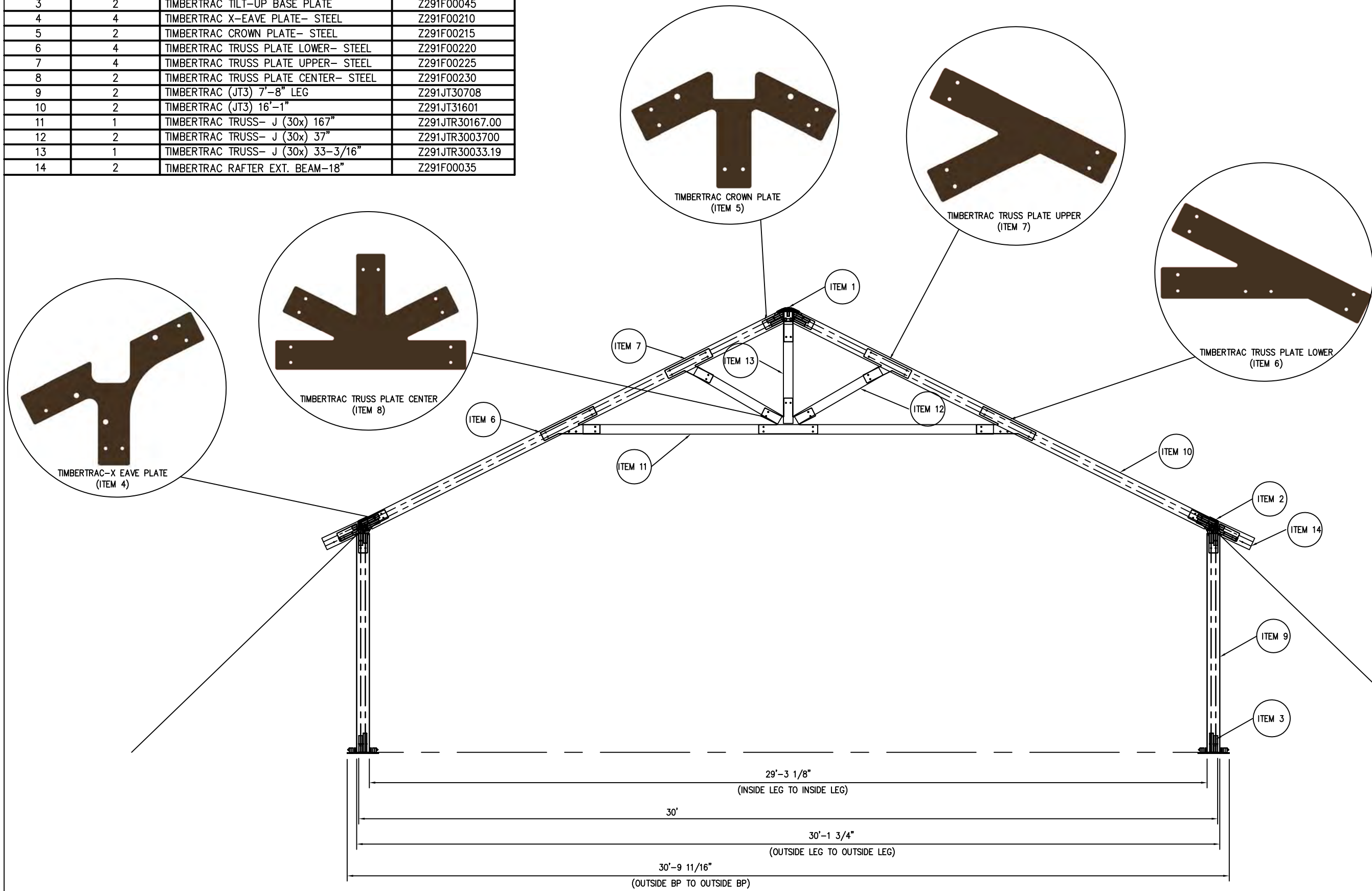
REVISION HISTORY			
REV.	DESCRIPTION	BY:	DATE:

PROPRIETARY

ENGINEER: N/A	DATE: 2/13/2020
PAGE: 1 OF 1	DRAWN: LYZ

ITEM	QUANTITY	DESCRIPTION	PART #
1	1	TIMBERTRAC CENTER CROWN	Z291F00015
2	2	TIMBERTRAC X-SIDE TEE	Z291F00030
3	2	TIMBERTRAC TILT-UP BASE PLATE	Z291F00045
4	4	TIMBERTRAC X-EAVE PLATE- STEEL	Z291F00210
5	2	TIMBERTRAC CROWN PLATE- STEEL	Z291F00215
6	4	TIMBERTRAC TRUSS PLATE LOWER- STEEL	Z291F00220
7	4	TIMBERTRAC TRUSS PLATE UPPER- STEEL	Z291F00225
8	2	TIMBERTRAC TRUSS PLATE CENTER- STEEL	Z291F00230
9	2	TIMBERTRAC (JT3) 7'-8" LEG	Z291JT30708
10	2	TIMBERTRAC (JT3) 16'-1"	Z291JT31601
11	1	TIMBERTRAC TRUSS- J (30x) 167"	Z291JTR30167.00
12	2	TIMBERTRAC TRUSS- J (30x) 37"	Z291JTR3003700
13	1	TIMBERTRAC TRUSS- J (30x) 33-3/16"	Z291JTR30033.19
14	2	TIMBERTRAC RAFTER EXT. BEAM-18"	Z291F00035

30'W X-GABLE MID TIMBERTRAC PROFILE



ALL DATA AND INFORMATION CONTAINED IN OR DISCLOSED BY THIS DOCUMENT IS PROPRIETARY INFORMATION OF AZTEC TENTS AND ALL RIGHTS THEREIN ARE EXPRESSLY RESERVED. BY ACCEPTING THIS MATERIAL, THE RECIPIENT AGREES THAT THIS MATERIAL AND INFORMATION CONTAINED HEREIN IS HELD IN CONFIDENCE AND IN TRUST AND WILL NOT BE COPIED, REPRODUCED WHOLE OR IN PART, NOR ITS CONTENTS REVEALED IN ANY MANNER TO OTHERS, EXCEPT TO MEET THE SPECIFIC PURPOSE FOR WHICH IT WAS DELIVERED.

AZTEC TENTS
 DESIGN & PRODUCTION
 2665 COLUMBIA ST. TORRANCE, CA. 90503
 (800) 228-3687 - FAX (310) 381-0722

TIMBERTRAC FRAME TENT
 30'W X-GABLE MID PROFILE
 PART NUMBER: Z26230CM1508

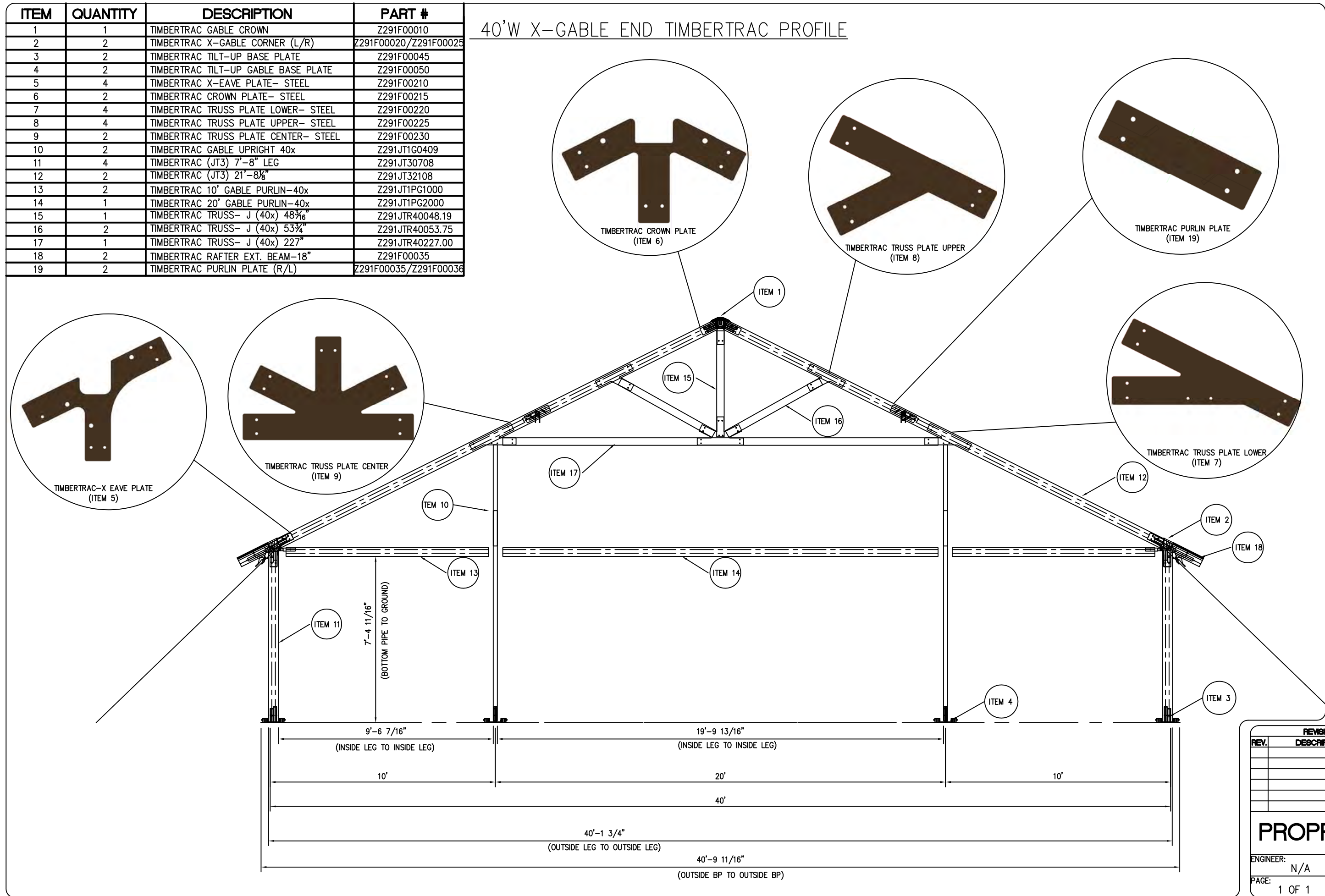
REVISION HISTORY			
REV.	DESCRIPTION	BY:	DATE:

PROPRIETARY

ENGINEER:	N/A	DATE:	2/13/2020
PAGE:	1 OF 1	DRAWN:	LYZ

ITEM	QUANTITY	DESCRIPTION	PART #
1	1	TIMBERTRAC GABLE CROWN	Z291F00010
2	2	TIMBERTRAC X-GABLE CORNER (L/R)	Z291F00020/Z291F00025
3	2	TIMBERTRAC TILT-UP BASE PLATE	Z291F00045
4	2	TIMBERTRAC TILT-UP GABLE BASE PLATE	Z291F00050
5	4	TIMBERTRAC X-EAVE PLATE- STEEL	Z291F00210
6	2	TIMBERTRAC CROWN PLATE- STEEL	Z291F00215
7	4	TIMBERTRAC TRUSS PLATE LOWER- STEEL	Z291F00220
8	4	TIMBERTRAC TRUSS PLATE UPPER- STEEL	Z291F00225
9	2	TIMBERTRAC TRUSS PLATE CENTER- STEEL	Z291F00230
10	2	TIMBERTRAC GABLE UPRIGHT 40x	Z291JT1G0409
11	4	TIMBERTRAC (JT3) 7'-8" LEG	Z291JT30708
12	2	TIMBERTRAC (JT3) 21'-8 1/8"	Z291JT32108
13	2	TIMBERTRAC 10' GABLE PURLIN-40x	Z291JT1PG1000
14	1	TIMBERTRAC 20' GABLE PURLIN-40x	Z291JT1PG2000
15	1	TIMBERTRAC TRUSS- J (40x) 48 5/16"	Z291JTR40048.19
16	2	TIMBERTRAC TRUSS- J (40x) 53 3/4"	Z291JTR40053.75
17	1	TIMBERTRAC TRUSS- J (40x) 227"	Z291JTR40227.00
18	2	TIMBERTRAC RAFTER EXT. BEAM-18"	Z291F00035
19	2	TIMBERTRAC PURLIN PLATE (R/L)	Z291F00035/Z291F00036

40'W X-GABLE END TIMBERTRAC PROFILE



ALL DATA AND INFORMATION CONTAINED IN OR DISCLOSED BY THIS DOCUMENT IS PROPRIETARY INFORMATION OF AZTEC TENTS AND ALL RIGHTS THEREIN ARE EXPRESSLY RESERVED. BY ACCEPTING THIS MATERIAL THE RECIPIENT AGREES THAT THIS MATERIAL AND INFORMATION CONTAINED THEREIN IS HELD IN CONFIDENCE AND IN TRUST AND WILL NOT BE COPIED, REPRODUCED WHOLE OR IN PART, NOR ITS CONTENTS REVEALED IN ANY MANNER TO OTHERS, EXCEPT TO MEET THE SPECIFIC PURPOSE FOR WHICH IT WAS DELIVERED.

AZTEC TENTS
 DESIGN & PRODUCTION
 2665 COLUMBIA ST. TORRANCE, CA. 90503
 (800) 228-3687 - FAX (310) 381-0722

TIMBERTRAC FRAME TENT
 40'W X-GABLE END PROFILE
 PART NUMBER: Z26240CE1508

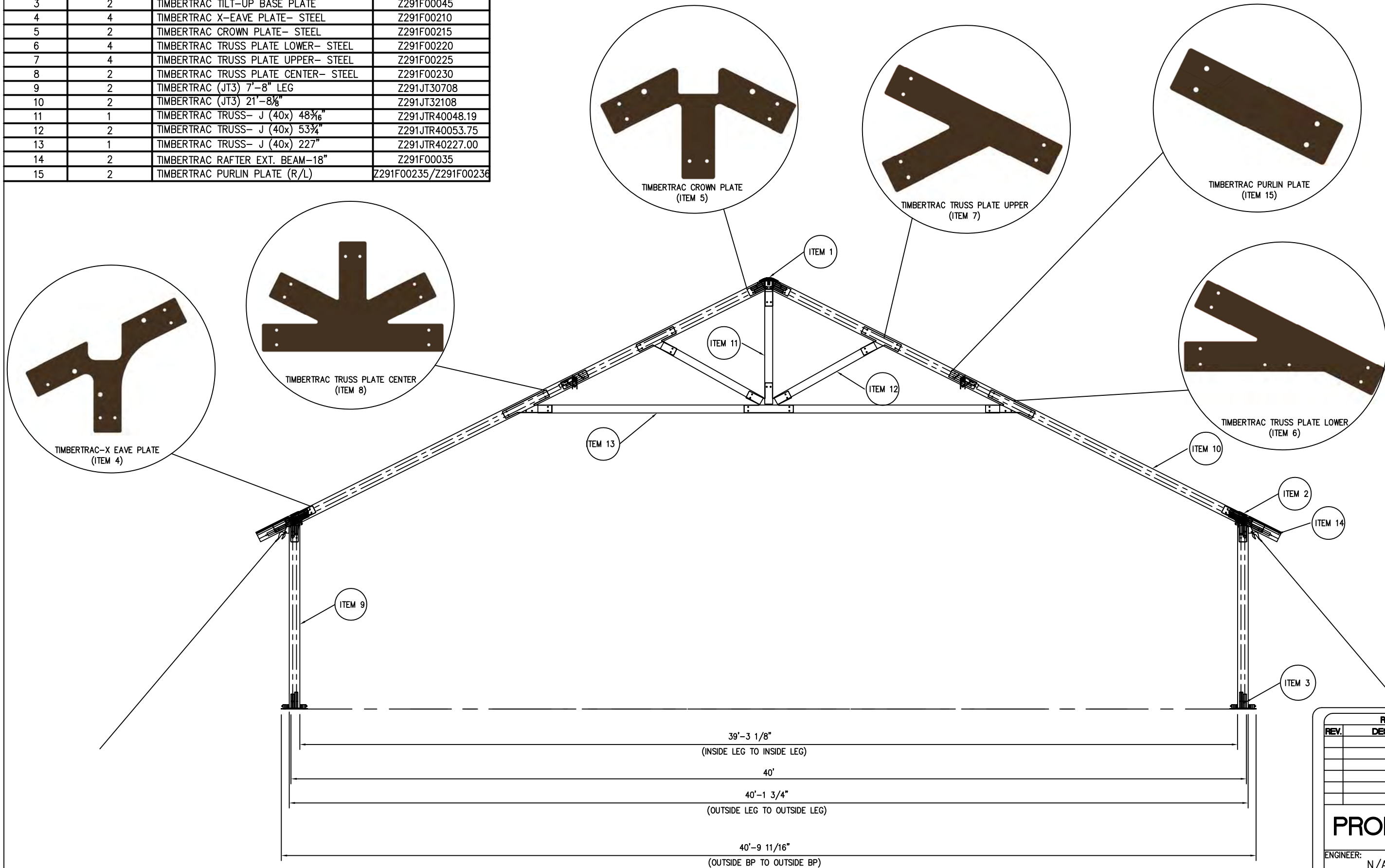
REVISION HISTORY			
REV.	DESCRIPTION	BY:	DATE:

PROPRIETARY

ENGINEER: N/A	DATE: 5/14/2020
PAGE: 1 OF 1	DRAWN: LYZ

ITEM	QUANTITY	DESCRIPTION	PART #
1	1	TIMBERTRAC CENTER CROWN	Z291F00015
2	2	TIMBERTRAC X-SIDE TEE	Z291F00030
3	2	TIMBERTRAC TILT-UP BASE PLATE	Z291F00045
4	4	TIMBERTRAC X-EAVE PLATE- STEEL	Z291F00210
5	2	TIMBERTRAC CROWN PLATE- STEEL	Z291F00215
6	4	TIMBERTRAC TRUSS PLATE LOWER- STEEL	Z291F00220
7	4	TIMBERTRAC TRUSS PLATE UPPER- STEEL	Z291F00225
8	2	TIMBERTRAC TRUSS PLATE CENTER- STEEL	Z291F00230
9	2	TIMBERTRAC (JT3) 7'-8" LEG	Z291JT30708
10	2	TIMBERTRAC (JT3) 21'-8 1/8"	Z291JT32108
11	1	TIMBERTRAC TRUSS- J (40x) 48 3/16"	Z291JTR40048.19
12	2	TIMBERTRAC TRUSS- J (40x) 53 3/4"	Z291JTR40053.75
13	1	TIMBERTRAC TRUSS- J (40x) 227"	Z291JTR40227.00
14	2	TIMBERTRAC RAFTER EXT. BEAM-18"	Z291F00035
15	2	TIMBERTRAC PURLIN PLATE (R/L)	Z291F00235/Z291F00236

40'W X-MID TIMBERTRAC PROFILE



ALL DATA AND INFORMATION CONTAINED IN OR DISCLOSED BY THIS DOCUMENT IS PROPRIETARY INFORMATION OF AZTEC TENTS AND ALL RIGHTS THEREIN ARE EXPRESSLY RESERVED. BY ACCEPTING THIS MATERIAL, THE RECIPIENT AGREES THAT THIS MATERIAL AND INFORMATION CONTAINED THEREIN IS HELD IN CONFIDENCE AND IN TRUST AND WILL NOT BE COPIED, REPRODUCED WHOLE OR IN PART, NOR ITS CONTENTS REVEALED IN ANY MANNER TO OTHERS, EXCEPT TO MEET THE SPECIFIC PURPOSE FOR WHICH IT WAS DELIVERED.

AZTEC TENTS
 DESIGN & PRODUCTION
 2665 COLUMBIA ST. TORRANCE, CA. 90503
 (800) 228-3687 - FAX (310) 381-0722

TIMBERTRAC FRAME TENT
 40'W TIMBERTRAC X-MID PROFILE
 PART NUMBER: Z26240CM1508

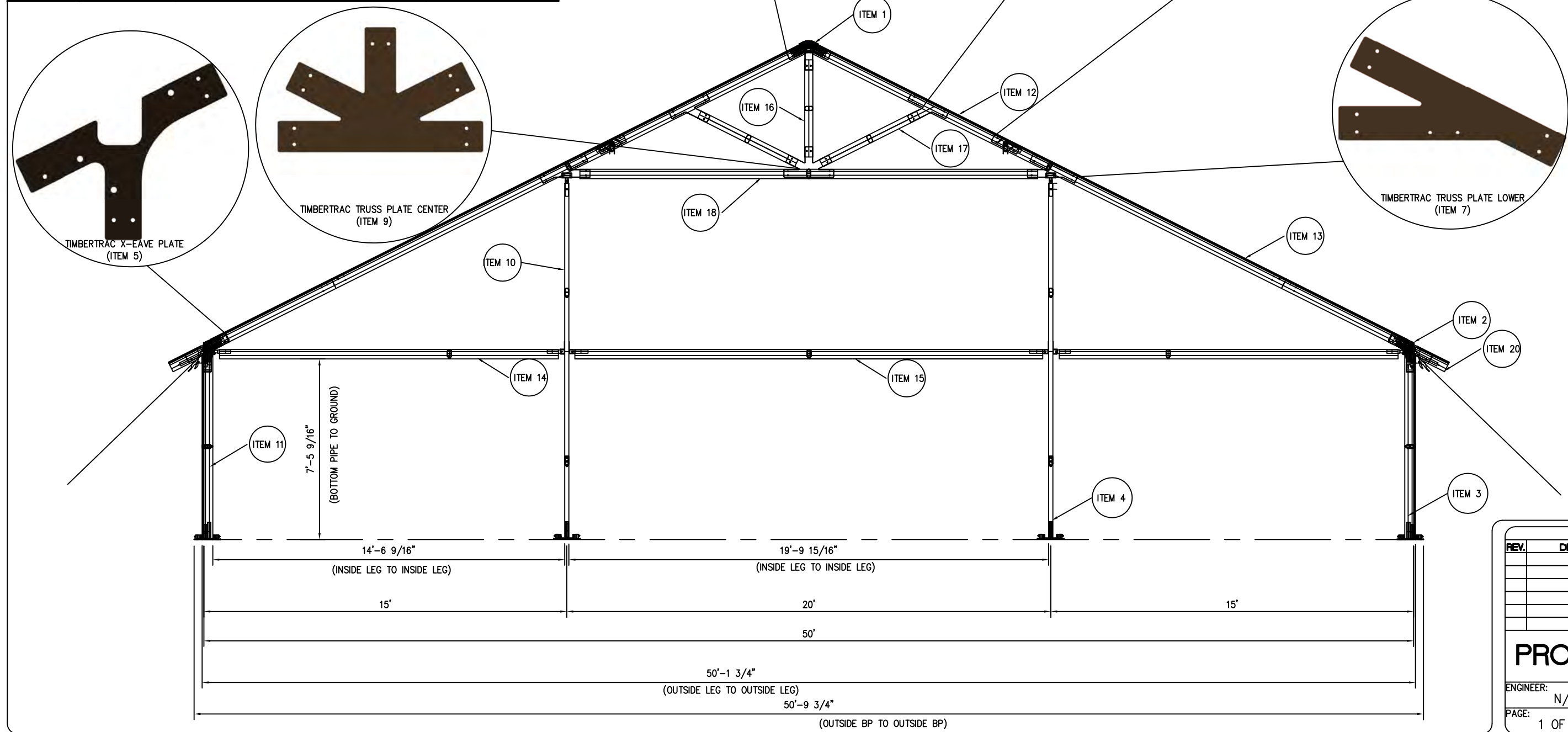
REVISION HISTORY			
REV.	DESCRIPTION	BY:	DATE:

PROPRIETARY

ENGINEER:	N/A	DATE:	5/14/2020
PAGE:	1 OF 1	DRAWN:	LYZ

ITEM	QUANTITY	DESCRIPTION	PART #
1	1	TIMBERTRAC GABLE CROWN	Z291F00010
2	2	TIMBERTRAC X-GABLE CORNER (L/R)	Z291F00020/Z291F00025
3	2	TIMBERTRAC TILT-UP BASE PLATE	Z291F00045
4	2	TIMBERTRAC TILT-UP GABLE BASE PLATE	Z291F00050
5	4	TIMBERTRAC X-EAVE PLATE- STEEL	Z291F00210
6	2	TIMBERTRAC CROWN PLATE- STEEL	Z291F00215
7	4	TIMBERTRAC TRUSS PLATE LOWER- STEEL	Z291F00220
8	4	TIMBERTRAC TRUSS PLATE UPPER- STEEL	Z291F00225
9	2	TIMBERTRAC TRUSS PLATE CENTER- STEEL	Z291F00230
10	2	TIMBERTRAC GABLE UPRIGHT 50x	Z291JT1G0611
11	4	TIMBERTRAC (JT3) 7'-8" LEG	Z291JT30708
12	2	TIMBERTRAC (JT3) 5'-7 1/16" (50x)	Z291JT30507
13	2	TIMBERTRAC (JT3) 21'-8 1/8"	Z291JT32108
14	2	TIMBERTRAC 15' GABLE PURLIN-50x	Z291JT1PG15005
15	1	TIMBERTRAC 20' GABLE PURLIN-40x	Z291JT1PG2000
16	1	TIMBERTRAC TRUSS- J (40x) 48 3/16"	Z291JTR40048.19
17	2	TIMBERTRAC TRUSS- J (40x) 53 3/4"	Z291JTR40053.75
18	1	TIMBERTRAC TRUSS- J (40x) 227"	Z291JTR40227.00
19	2	TIMBERTRAC PURLIN PLATE (R/L)	Z291F00235/Z291F00236
20	2	TIMBERTRAC RAFTER EXT. BEAM-18"	Z291F00035

50'W X-GABLE END TIMBERTRAC PROFILE



ALL DATA AND INFORMATION CONTAINED IN OR DISCLOSED BY THIS DOCUMENT IS PROPRIETARY INFORMATION OF AZTEC TENTS AND ALL RIGHTS THEREIN ARE EXPRESSLY RESERVED. BY ACCEPTING THIS MATERIAL THE RECIPIENT AGREES THAT THIS MATERIAL AND INFORMATION CONTAINED HEREIN IS HELD IN CONFIDENCE AND IN TRUST AND WILL NOT BE COPIED, REPRODUCED WHOLE OR IN PART, NOR ITS CONTENTS REVEALED IN ANY MANNER TO OTHERS, EXCEPT TO MEET THE SPECIFIC PURPOSE FOR WHICH IT WAS DELIVERED.

AZTEC TENTS
 DESIGN & PRODUCTION
 2665 COLUMBIA ST. TORRANCE, CA. 90503
 (800) 228-3687 - FAX (310) 381-0722

TIMBERTRAC FRAME TENT
 50'W X-GABLE END PROFILE
 PART NUMBER: Z26250CE1508

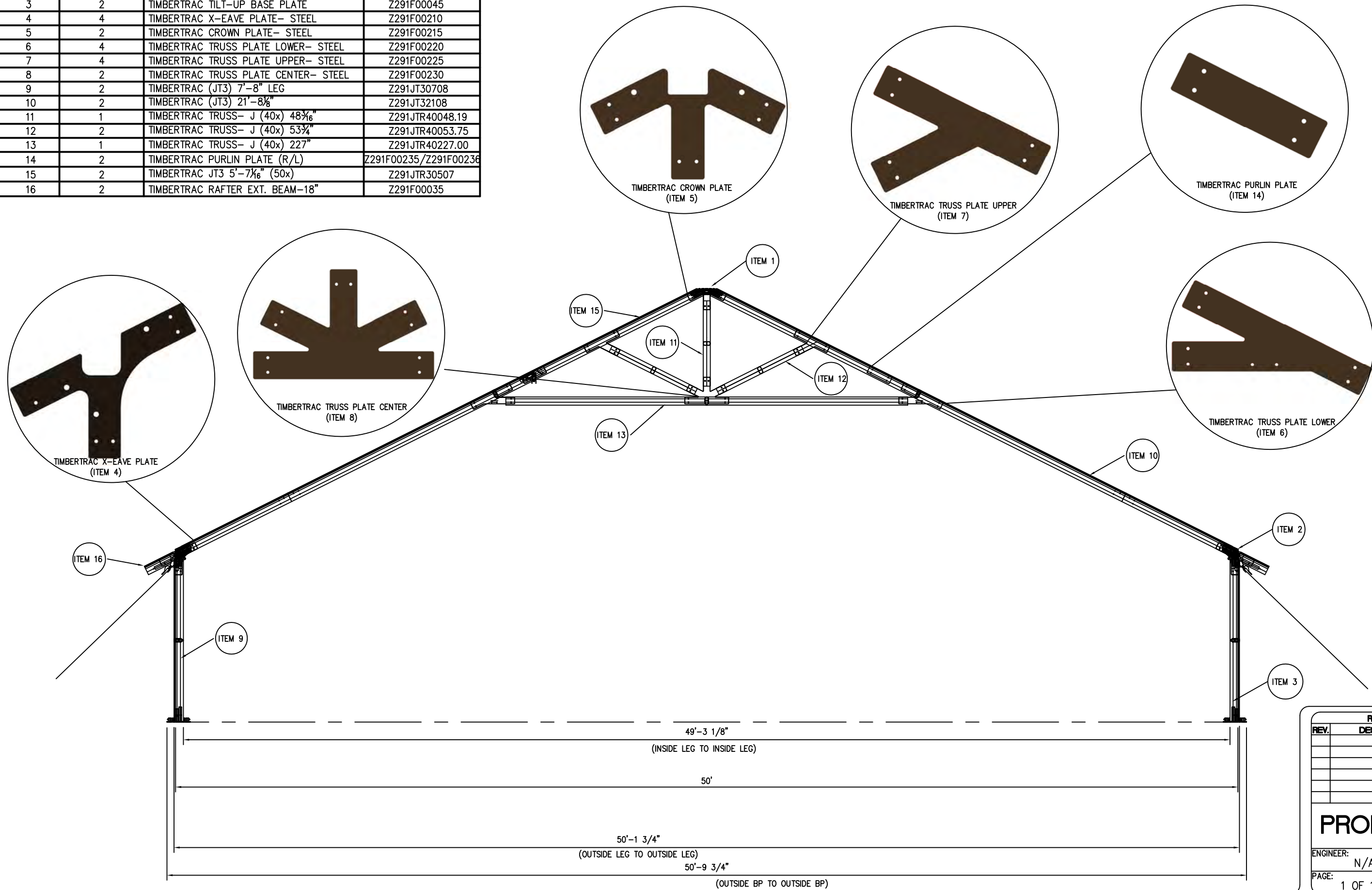
REVISION HISTORY			
REV.	DESCRIPTION	BY:	DATE:

PROPRIETARY

ENGINEER: N/A	DATE: 5/19/2020
PAGE: 1 OF 1	DRAWN: LYZ

ITEM	QUANTITY	DESCRIPTION	PART #
1	1	TIMBERTRAC CENTER CROWN	Z291F00015
2	2	TIMBERTRAC X-SIDE TEE	Z291F00030
3	2	TIMBERTRAC TILT-UP BASE PLATE	Z291F00045
4	4	TIMBERTRAC X-EAVE PLATE- STEEL	Z291F00210
5	2	TIMBERTRAC CROWN PLATE- STEEL	Z291F00215
6	4	TIMBERTRAC TRUSS PLATE LOWER- STEEL	Z291F00220
7	4	TIMBERTRAC TRUSS PLATE UPPER- STEEL	Z291F00225
8	2	TIMBERTRAC TRUSS PLATE CENTER- STEEL	Z291F00230
9	2	TIMBERTRAC (JT3) 7'-8" LEG	Z291JT30708
10	2	TIMBERTRAC (JT3) 21'-8 1/8"	Z291JT32108
11	1	TIMBERTRAC TRUSS- J (40x) 48 3/16"	Z291JTR40048.19
12	2	TIMBERTRAC TRUSS- J (40x) 53 3/4"	Z291JTR40053.75
13	1	TIMBERTRAC TRUSS- J (40x) 227"	Z291JTR40227.00
14	2	TIMBERTRAC PURLIN PLATE (R/L)	Z291F00235/Z291F00236
15	2	TIMBERTRAC JT3 5'-7 1/16" (50x)	Z291JTR30507
16	2	TIMBERTRAC RAFTER EXT. BEAM-18"	Z291F00035

50'W X-MID TIMBERTRAC PROFILE



ALL DATA AND INFORMATION CONTAINED IN OR DISCLOSED BY THIS DOCUMENT IS PROPRIETARY INFORMATION OF AZTEC TENTS AND ALL RIGHTS THEREIN ARE EXPRESSLY RESERVED. BY ACCEPTING THIS MATERIAL, THE RECIPIENT AGREES THAT THIS MATERIAL AND INFORMATION CONTAINED THEREIN IS HELD IN CONFIDENCE AND IN TRUST AND WILL NOT BE COPIED, REPRODUCED WHOLE OR IN PART, NOR ITS CONTENTS REVEALED IN ANY MANNER TO OTHERS, EXCEPT TO MEET THE SPECIFIC PURPOSE FOR WHICH IT WAS DELIVERED.

AZTEC TENTS
 DESIGN & PRODUCTION
 2665 COLUMBIA ST. TORRANCE, CA. 90503
 (800) 228-3687 - FAX (310) 381-0722

TIMBERTRAC FRAME TENT
 50'W TIMBERTRAC X-MID
 PART NUMBER: Z26250CM1508

REVISION HISTORY			
REV.	DESCRIPTION	BY:	DATE:

PROPRIETARY

ENGINEER:	N/A	DATE:	5/19/2020
PAGE:	1 OF 1	DRAWN:	LYZ