

ADENA™

Where Clean Design Creates Exemplary Event Space



WHY ADENA?

- Unique tent shape and design
- Minimal components
- Perfect for smaller gatherings of distinction
- Created for dining, wedding ceremonies, bar areas, retail, entryways, and tradeshow
- Able to be fully enclosed with wall and gables
- Fully bonded keder

PRODUCT OVERVIEW

Inspired by the modernist movement of the 1950's, the Adena™ captures the classic visual lines of the traditional European Grubenhau with modern flair. Available in matte black or Graincoated™ timber finishing, the shape of this tent looks different from everything you've ever seen.

All fabric sections slide through a keder channel in the rafter beams and complete assembly can be done from the ground without the use of heavy equipment or tall ladders. Sidewalls are available to enclose as much of the tent as needed. Gable panels can be closed or left off to create a more open event atmosphere.

Perfect for intimate garden to table events, unique entryways, wedding ceremonies, and more.

ENGINEERING

ASCE 7-16 110MPH Exposure "C"

ONLINE PRODUCT INFORMATION



See our website for additional images and information featuring the benefits of this tent system.

CALL US TODAY 800.228.3687 · AZTECTENTS.COM

 **AZTEC TENTS**
DESIGN & PRODUCTION

THE AZTEC ADVANTAGE

SIMPLY IMPACTFUL (IN A SMALL FOOTPRINT)

SPECIFICATIONS

Width:
17'9-1/4" (5.417m) To outside
of baseplate

Height:
15'0-3/4" (4.591m)

Lengths:
Expandable in 10' (3.048m)
modular bays

Configurations:
Able to be installed with gables and
without gables

Fabric:
ProSail™ II proprietary PVC laminated
polyester sailcloth, Transparent clear
with Prosail™ II Trim, Transparent
clear with black trim

Framework:
Powdercoated 6061-T6 Aluminum
frame system

Frame Colors:
Flat Black, Woodgrain, or other
custom colors

Flame Retardancy:
NFPA 701, CA State Fire Marshal Title
19, CAN ULC S109-03

Common Accessories:
Sidewalls, pull ropes, and repair kits



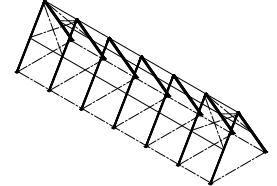
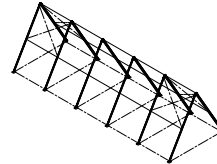
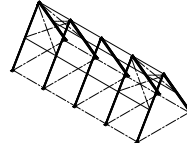
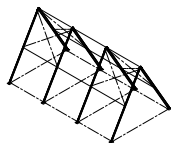
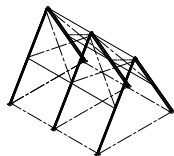
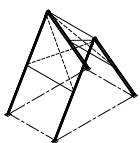
1. Durable Aluminum Extrusions:
Built for repetitive rental
application use and seasonal
applications

2. Color Options:
Choose matte black or timber
frame color options and fabric
panels to match. Custom colors
are available

3. Tilt-Up Design:
Beams are installed on the
ground and tilted into space,
portal braces allow access
through all sides

4. Versatility:
Use combinations of wall options
to close or open the event space
as needed for each event

CONFIGURATIONS



CALL US TODAY 800.228.3687 · AZTECTENTS.COM

AZTEC TENTS
DESIGN & PRODUCTION