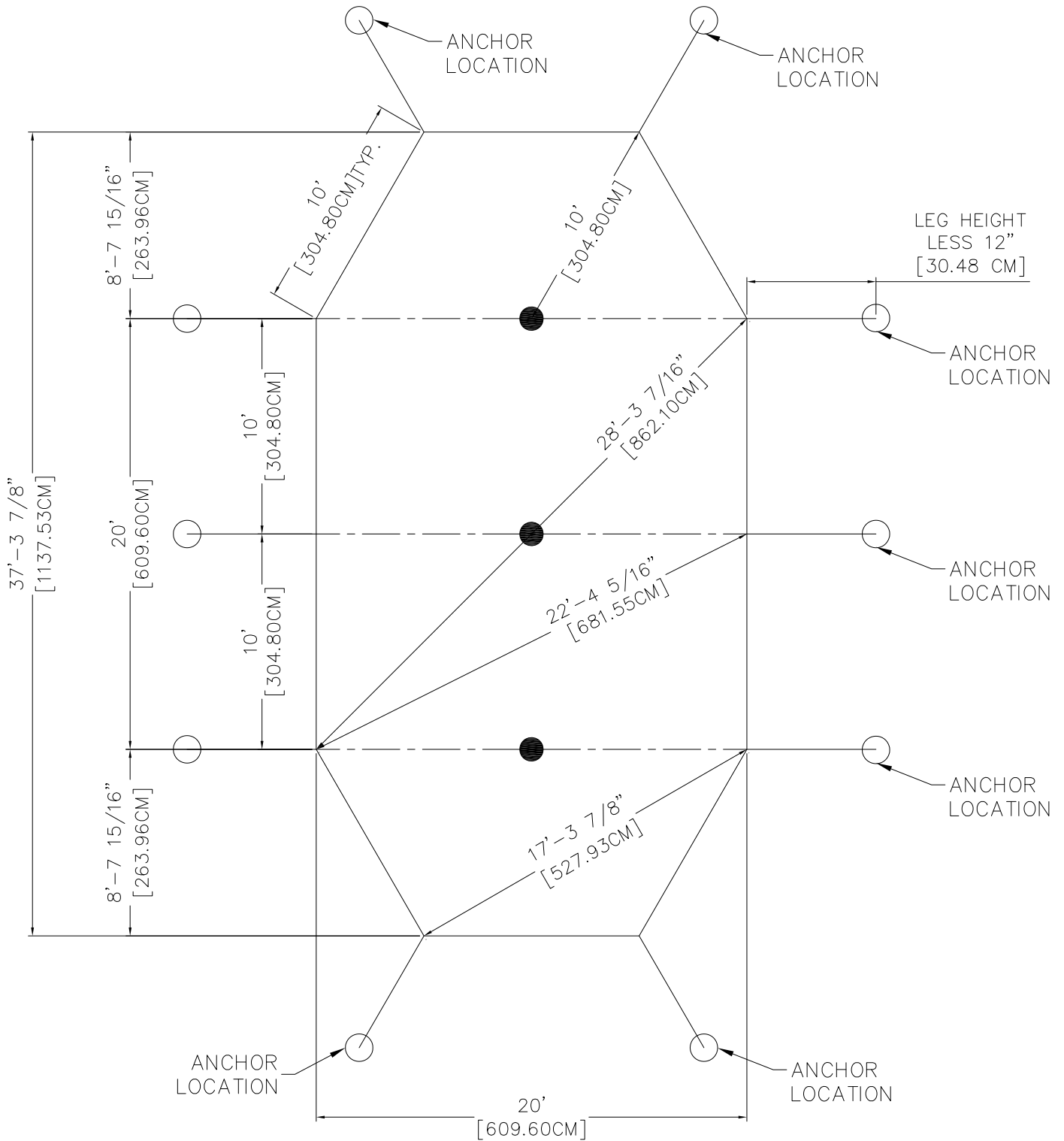


# 20X TIDEWATER SAILCLOTH SQUARING



REVISION HISTORY			
REV.	DESCRIPTION	BY:	DATE:

<b>CONFIDENTIAL</b>	
ENGINEER: N/A	DATE: 4/27/2018
PAGE: 1 OF 1	DRAWN: LYZ

<b>POLE TENTS</b>
TIDEWATER 20X SQUARING
PART NUMBER: ZXXXXXX

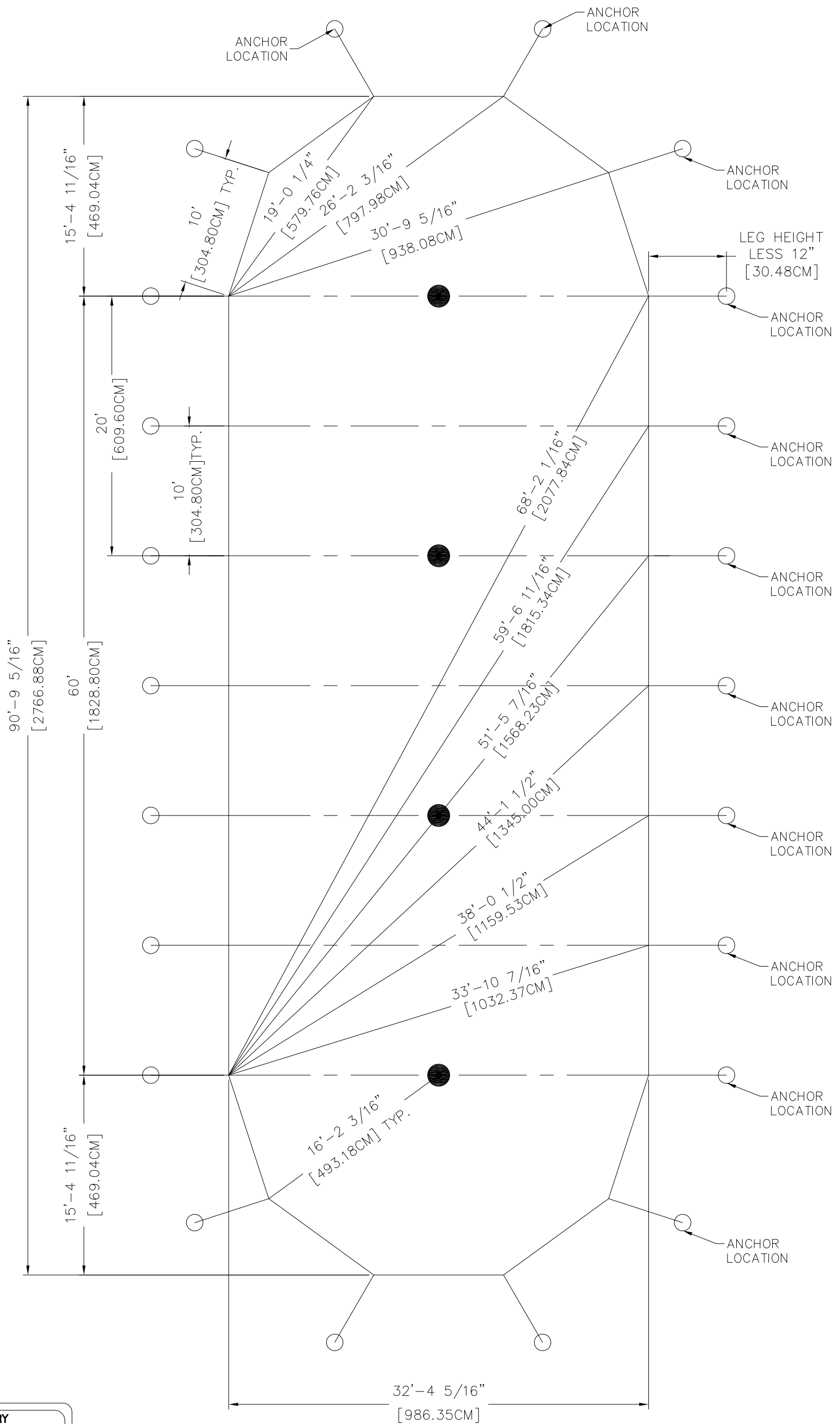


**DESIGN & PRODUCTION**

2665 COLUMBIA ST. TORRANCE, CA. 90503  
(800) 228-3687 - FAX (310) 381-0722

ALL DATA AND INFORMATION CONTAINED IN OR DISCLOSED BY THIS DOCUMENT IS CONFIDENTIAL AND PROPRIETARY INFORMATION OF AZTEC TENTS AND ALL RIGHTS THEREIN ARE EXPRESSLY RESERVED. BY ACCEPTING THIS MATERIAL THE RECIPIENT AGREES THAT THIS MATERIAL AND INFORMATION CONTAINED THEREIN IS HELD IN CONFIDENCE AND IN TRUST AND WILL NOT BE COPIED, REPRODUCED WHOLE OR IN PART, NOR ITS CONTENTS REVEALED IN ANY MANNER TO OTHERS, EXCEPT TO MEET THE SPECIFIC PURPOSE FOR WHICH IT WAS DELIVERED.

# 32X TIDEWATER SAILCLOTH SQUARING



● CENTER POLES

REVISION HISTORY			
REV.	DESCRIPTION	BY	DATE

**CONFIDENTIAL**

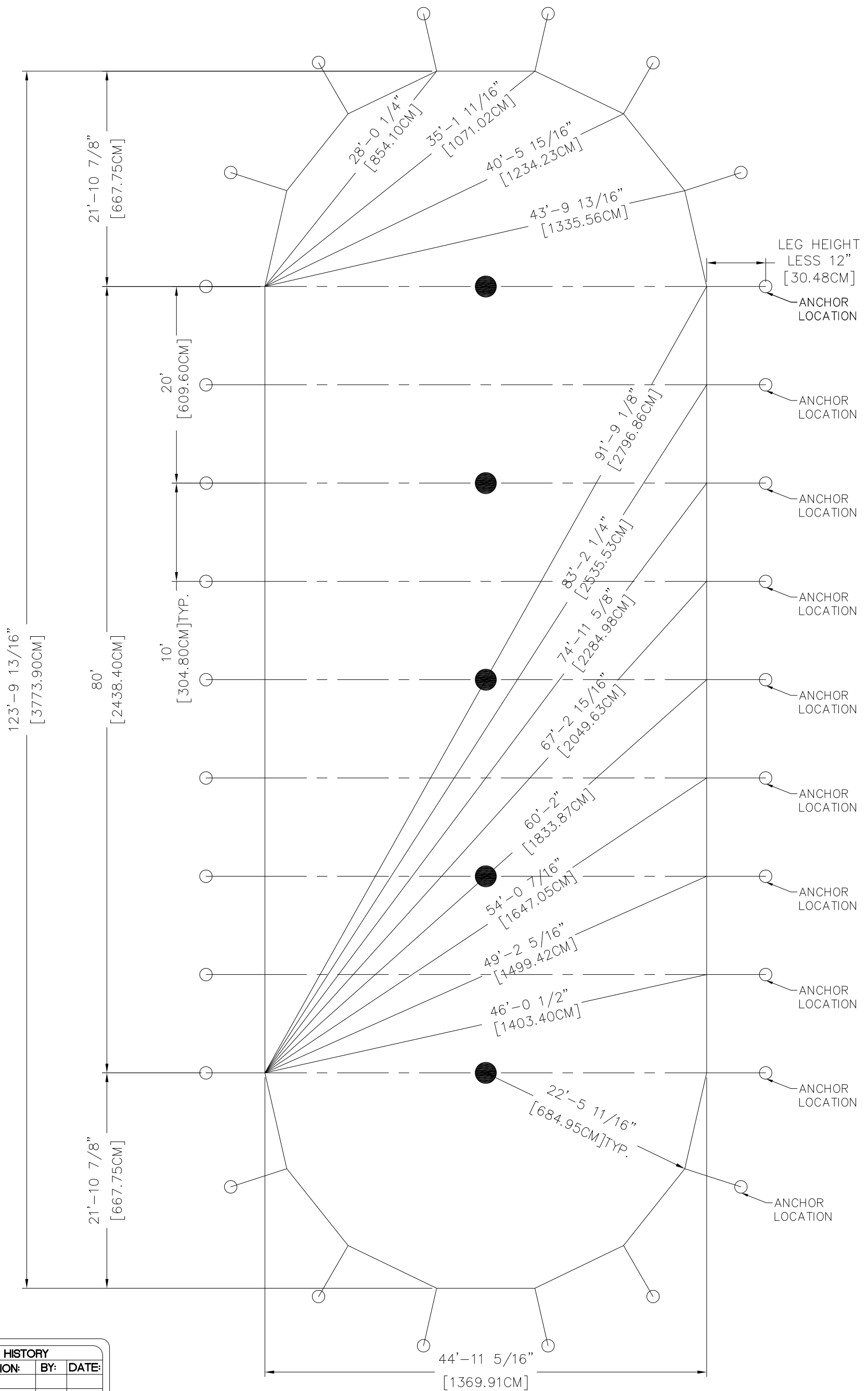
ENGINEER: N/A	DATE: 4/27/2018
PAGE: 1 OF 1	DRAWN: LYZ

<b>POLE TENTS</b>
TIDEWATER 32X SQUARING
PART NUMBER: ZXXXXXX

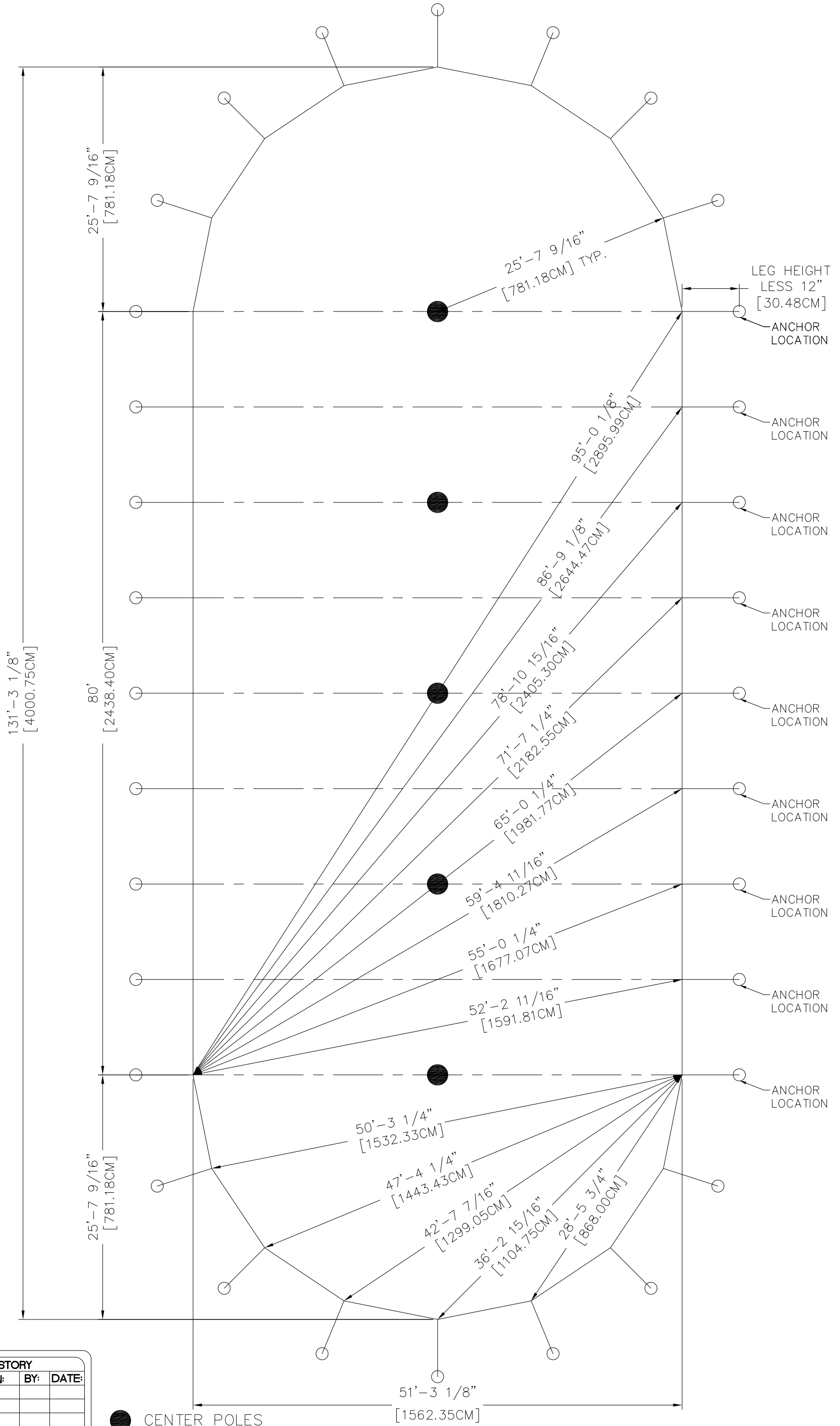
**AZTEC TENTS**  
**DESIGN & PRODUCTION**  
 2665 COLUMBIA ST. TORRANCE, CA. 90503  
 (800) 228-3687 - FAX (310) 381-0722

ALL DATA AND INFORMATION CONTAINED IN OR DISCLOSED BY THIS DOCUMENT IS CONFIDENTIAL AND PROPRIETARY INFORMATION OF AZTEC TENTS AND ALL RIGHTS THEREIN ARE EXPRESSLY RESERVED. BY ACCEPTING THIS MATERIAL THE RECIPIENT AGREES THAT THIS MATERIAL AND INFORMATION CONTAINED THEREIN IS HELD IN CONFIDENCE AND IN TRUST AND WILL NOT BE COPIED, REPRODUCED WHOLE OR IN PART, NOR ITS CONTENTS REVEALED IN ANY MANNER TO OTHERS, EXCEPT TO MEET THE SPECIFIC PURPOSE FOR WHICH IT WAS DELIVERED.

# 44X TIDEWATER SAILCLOTH SQUARING



51X TIDEWATER SAILCLOTH SQUARING



REVISION HISTORY			
REV.	DESCRIPTION:	BY:	DATE:

**CONFIDENTIAL**

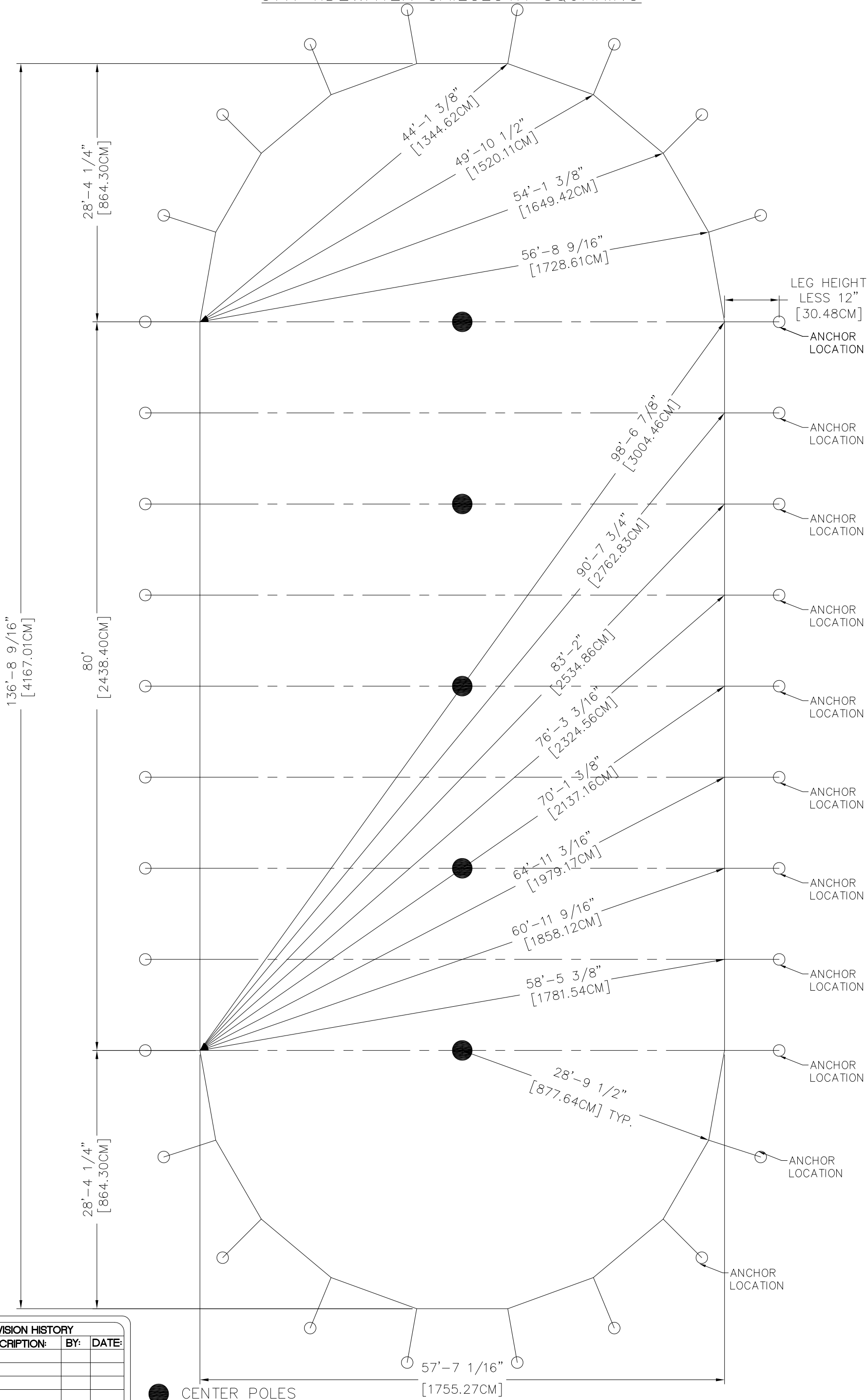
ENGINEER: N/A DATE: 4/27/2018  
 PAGE: 1 OF 1 DRAWN: LYZ

**POLE TENTS**  
 TIDEWATER 51X SQUARING  
 PART NUMBER: ZXXXXXXX

**AZTEC TENTS**  
 DESIGN & PRODUCTION  
 2665 COLUMBIA ST. TORRANCE, CA. 90503  
 (800) 228-3687 - FAX (310) 381-0722

ALL DATA AND INFORMATION CONTAINED IN OR DISCLOSED BY THIS DOCUMENT IS CONFIDENTIAL AND PROPRIETARY INFORMATION OF AZTEC TENTS AND ALL RIGHTS THEREIN ARE EXPRESSLY RESERVED. BY ACCEPTING THIS MATERIAL THE RECIPIENT AGREES THAT THIS MATERIAL AND INFORMATION CONTAINED THEREIN IS HELD IN CONFIDENCE AND IN TRUST AND WILL NOT BE COPIED, REPRODUCED WHOLE OR IN PART, NOR ITS CONTENTS REVEALED IN ANY MANNER TO OTHERS, EXCEPT TO MEET THE SPECIFIC PURPOSE FOR WHICH IT WAS DELIVERED.

57X TIDEWATER SAILCLOTH SQUARING



REVISION HISTORY			
REV.	DESCRIPTION:	BY:	DATE:

**CONFIDENTIAL**

ENGINEER: N/A      DATE: 4/27/2018  
 PAGE: 1 OF 1      DRAWN: LYZ

**POLE TENTS**

TIDEWATER 57X SQUARING

PART NUMBER: ZXXXXXXX

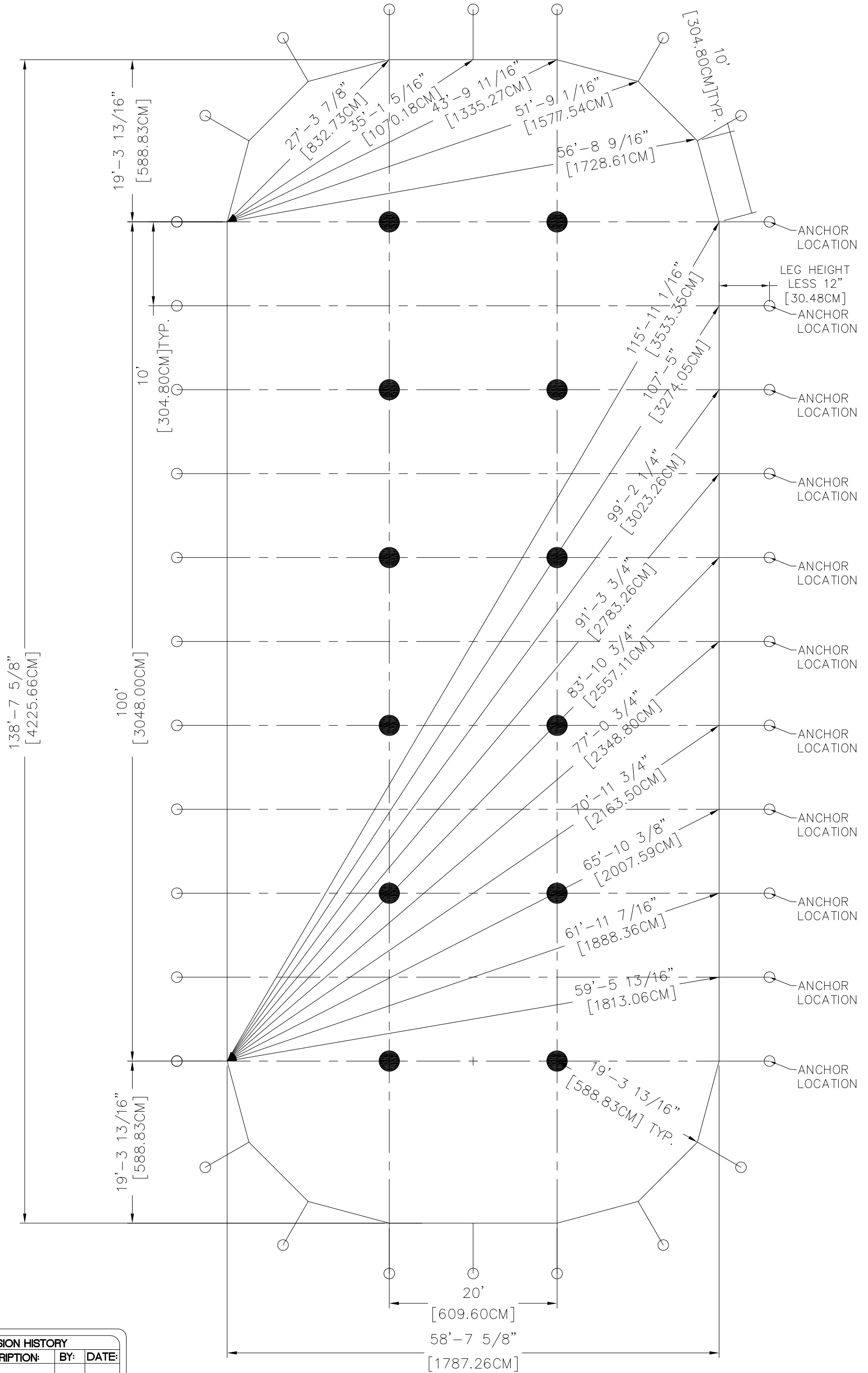


**DESIGN & PRODUCTION**

2665 COLUMBIA ST. TORRANCE, CA. 90503  
 (800) 228-3687 - FAX (310) 381-0722

ALL DATA AND INFORMATION CONTAINED IN OR DISCLOSED BY THIS DOCUMENT IS CONFIDENTIAL AND PROPRIETARY INFORMATION OF AZTEC TENTS AND ALL RIGHTS THEREIN ARE EXPRESSLY RESERVED. BY ACCEPTING THIS MATERIAL THE RECIPIENT AGREES THAT THIS MATERIAL AND INFORMATION CONTAINED THEREIN IS HELD IN CONFIDENCE AND IN TRUST AND WILL NOT BE COPIED, REPRODUCED WHOLE OR IN PART, NOR ITS CONTENTS REVEALED IN ANY MANNER TO OTHERS, EXCEPT TO MEET THE SPECIFIC PURPOSE FOR WHICH IT WAS DELIVERED.

# 59X TIDEWATER SAILCLOTH SQUARING



REVISION HISTORY			
REV.	DESCRIPTION	BY:	DATE:

**CONFIDENTIAL**

ENGINEER: N/A      DATE: 4/30/2018  
 PAGE: 1 OF 1      DRAWN: LYZ

**POLE TENTS**

TIDEWATER 59X SQUARING

PART NUMBER: ZXXXXXX

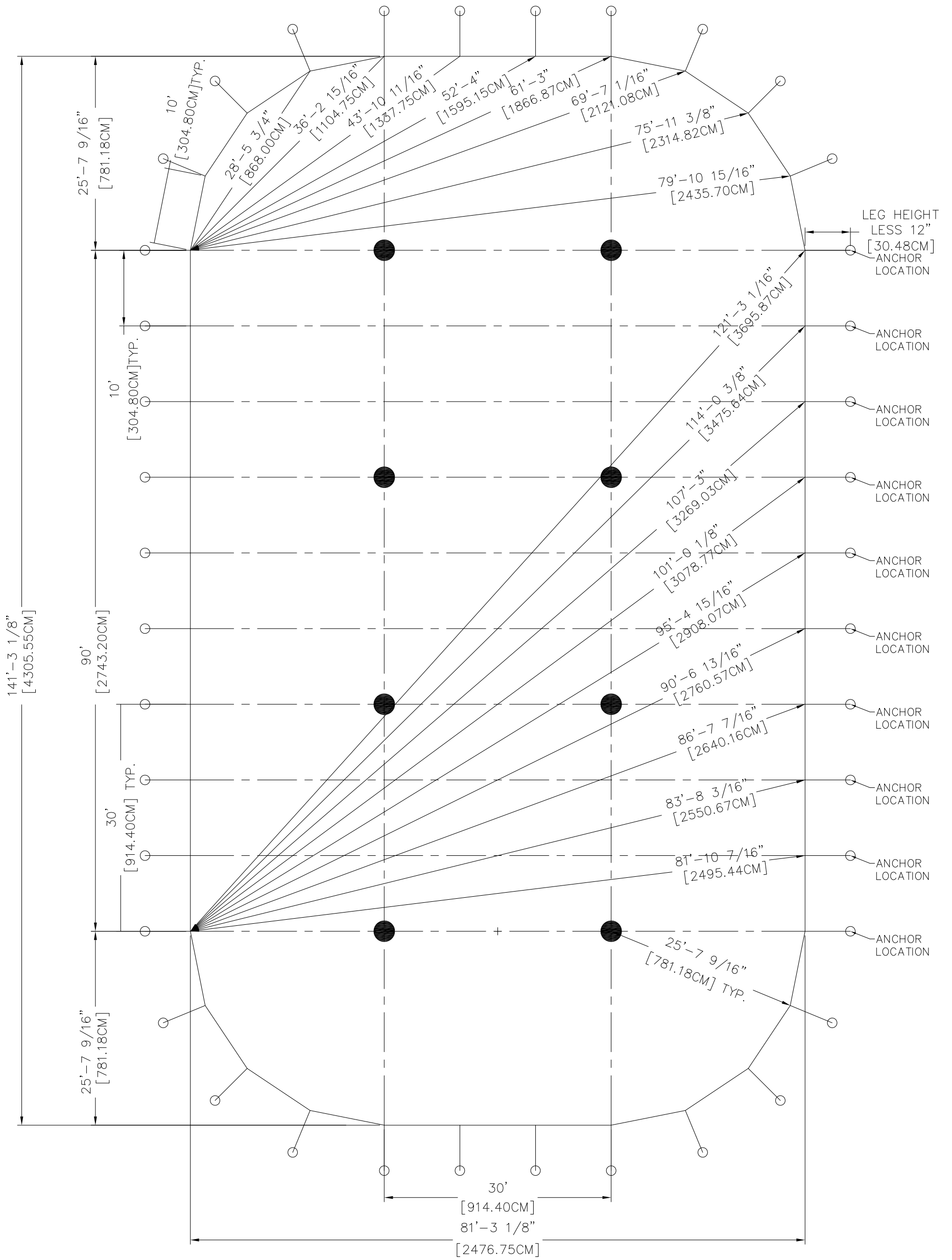
**AZTEC TENTS**

DESIGN & PRODUCTION

2665 COLUMBIA ST. TORRANCE, CA. 90503  
 (800) 228-3687 - FAX (310) 381-0722

ALL DATA AND INFORMATION CONTAINED IN OR DISCLOSED BY THIS DOCUMENT IS CONFIDENTIAL AND PROPRIETARY INFORMATION OF AZTEC TENTS AND ALL RIGHTS THEREIN ARE EXPRESSLY RESERVED. BY ACCEPTING THIS MATERIAL THE RECIPIENT AGREES THAT THIS MATERIAL AND INFORMATION CONTAINED THEREIN IS HELD IN CONFIDENCE AND IN TRUST AND WILL NOT BE COPIED, REPRODUCED WHOLE OR IN PART, NOR ITS CONTENTS REVEALED IN ANY MANNER TO OTHERS, EXCEPT TO MEET THE SPECIFIC PURPOSE FOR WHICH IT WAS DELIVERED.

# 81X TIDEWATER SAILCLOTH SQUARING



REVISION HISTORY			
REV.	DESCRIPTION:	BY:	DATE:

**CONFIDENTIAL**

ENGINEER: N/A      DATE: 4/30/2018  
 PAGE: 1 OF 1      DRAWN: LYZ

**POLE TENTS**

TIDEWATER 81X SQUARING

PART NUMBER: ZXXXXXX

**AZTEC TENTS**

DESIGN & PRODUCTION

2665 COLUMBIA ST. TORRANCE, CA. 90503  
 (800) 228-3687 - FAX (310) 381-0722

ALL DATA AND INFORMATION CONTAINED IN OR DISCLOSED BY THIS DOCUMENT IS CONFIDENTIAL AND PROPRIETARY INFORMATION OF AZTEC TENTS AND ALL RIGHTS THEREIN ARE EXPRESSLY RESERVED. BY ACCEPTING THIS MATERIAL THE RECIPIENT AGREES THAT THIS MATERIAL AND INFORMATION CONTAINED THEREIN IS HELD IN CONFIDENCE AND IN TRUST AND WILL NOT BE COPIED, REPRODUCED WHOLE OR IN PART, NOR ITS CONTENTS REVEALED IN ANY MANNER TO OTHERS, EXCEPT TO MEET THE SPECIFIC PURPOSE FOR WHICH IT WAS DELIVERED.